



Grenfell Memorial Community Mosaic – Phase Two

A fixed-term work placement for young photographers living in North Kensington (including mentoring from a professional photographer).

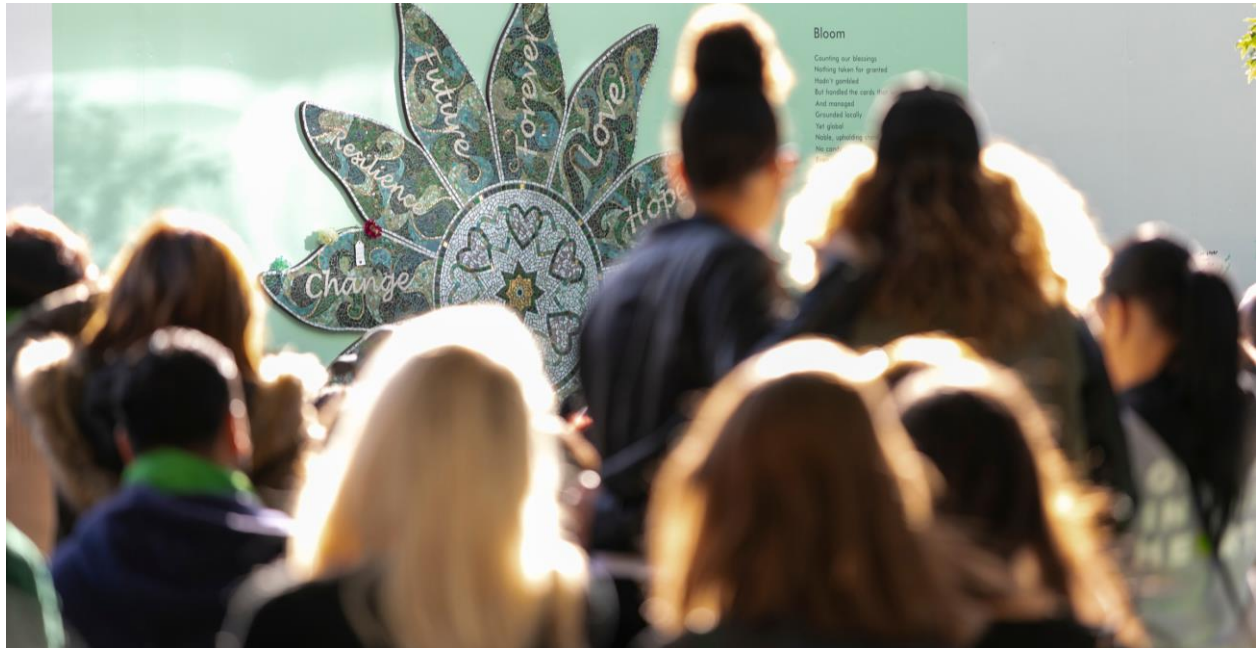


Image: Zute Lightfoot

About the project

Thanks to support from the Kensington and Chelsea Foundation, Al Manaar Muslim Cultural Heritage Centre and ACAVA (Association for Cultural Advancement through Visual Art) are delighted to announce phase two of the Grenfell Memorial Community Mosaic project: Bloom.

Phase one saw a series of 12 mosaic petals, created by a different community or faith group each month, installed on the hoarding at the base of Grenfell Tower as a mark of remembrance and solidarity. The completed flower was unveiled in June as part of the two year memorial service to remember the 72 lives lost in the fire.

Over a two year period, the second phase will see 24 mosaic leaves, fabricated by North Kensington community groups, tenants' and residents' associations and schools, added to the existing artwork on 14th of each month, commencing September 2019.

Opportunity for Young Photographers

ACAVA is offering paid part-time work placements for local young adults to work alongside our commissioned photographer [Zute Lightfoot](#) for a period of 5-6 months each, commencing September 2019.

This will involve:

- Shadowing Zute;
- Documenting the monthly install of the mosaic leaves;
- Editing and uploading images for ACAVA to access and utilise;
- Graduating to undertaking these processes independently;
- 16 hours of additional mentoring time from Zute, to be utilised as they wish; this could be to have Zute as a critical friend to develop their practice, or to better understand client/photographer relationships, legalities and copyrights of images... it is up to each individual to decide what would be most useful to them;

You will come away from the project with a full body of work for your portfolio, and a real life understanding of shooting, delivering and managing an ongoing relationship with a client (ACAVA/AI Manaar).

A DSLR camera will be available to book out for the assignments, and space at ACAVA can be utilised to undertake any tasks related to the project.

Criteria

You will be a young adult (aged 18yrs - 25yrs), currently living in North Kensington (W10/W11) who:

- Has some experience with photography
- Knows how to use a DSLR camera
- Has some experience of photo editing programmes
- Has a basic level of computer literacy
- Is keen to develop or add to a portfolio of work
- Wants to gain skills and experience in undertaking an assignment from beginning to end
- Wants to utilise the knowledge and experience of a professional photographer to support the development of your own career
- Is able to commit to the part time role from either Sept 2019 to January 2020 or February 2020 to June 2020

Further information

You will be paid the London Living Wage of £10.55 per hour and will be issued a fixed-term contract by ACAVA for the duration of the placement.

Schedule for the first placement is as follows:

Date	Time	Task	Payment	Support
Friday 13 Sept	3 hrs	Document installation of leaf. Look through photos, edit and upload on to online platform.	£31.65	Shadow Zute
Monday 14 Oct	3 hrs	Document installation of leaf. Look through photos, edit and upload on to online platform.	£31.65	Shadow Zute
Thursday 14 Nov	3 hrs	Document installation of leaf. Look through photos, edit and upload on to online platform.	£31.65	Work with Zute or independently, dependent on skills and confidence

Friday 13 Dec	3 hrs	Document installation of leaf. Look through photos, edit and upload on to online platform.	£31.65	Work independently
Tuesday 14 Jan	3 hrs	Document installation of leaf. Look through photos, edit and upload on to online platform.	£31.65	Work independently
Dates to be mutually agreed	16 hrs	Opportunity to be mentored by Zute – focus to be mutually agreed	£168.80	Mentor time with Zute
	3.75hrs	Holiday pay	£39.56	

Total fee for placement including holiday pay £ 366.61

The second opportunity will run from February 2020 – June 2020 and follow a similar schedule.

How to apply

If you would like to apply for this opportunity, please email our Programme Manager, Lisa Nash at lnash@acava.org with the following:

- A personal statement, no longer than one side of A4, outlining your work experience to date, why you are interested in applying and how you meet the criteria
- How you would utilise the 16 hours of mentor time with Zute
- Five images of your work or a link to your website / Instagram account
- Up to date CV including any qualifications
- An indication your availability for either September 2019 – January 2020 or February 2020 – June 2020

Deadline for receipt of applications: **9am Tuesday 27th August 2019**

Interview date: **Tuesday 3rd September 2019**

Find out more about the Grenfell Memorial Community Mosaic [here](#).

